

SIMPLE TO USE DESKTOP GIS SOLUTIONS FOR PUBLIC WORKS MANAGEMENT

CARTOGRAPHIC ASSOCIATES, INC. (CAI) HAS BEEN WORKING WITH PUBLIC WORKS DEPARTMENTS THROUGHOUT NEW ENGLAND SINCE 1996.

USING THE LATEST TRIMBLE AND ESRI TECHNOLOGIES, PWIM (PUBLIC WORKS INFORMATION MANAGER) PROVIDES AFFORDABLE, POWERFUL, EASY-TO- USE, GIS TOOLS THAT WILL ALLOW YOU TO EXPLORE, BROWSE, EDIT, AND REPORT FROM YOUR PUBLIC WORKS SYSTEM GIS DATABASE.



- ❖ MANAGE GIS DATA QUICKLY WITH MINIMAL TRAINING.
- ❖ UTILIZE STATE OF THE ART ESRI GEODATABASE TECHNOLOGY TO UPDATE FEATURE LOCATIONS WHILE MAINTAINING CONNECTIVITY RULES BUILT WITHIN THE PIPELINE NETWORK.
- ❖ SIMPLE UPDATING OF ATTRIBUTES USING DROP DOWN MENUS OF AVAILABLE ATTRIBUTE DOMAINS FOR SYSTEM FEATURES.
- ❖ ADD AND MAINTAIN SYSTEM FEATURES YOURSELF WITHOUT RELYING ON A CONSULTANT FOR DATA COLLECTION SERVICES.
- ❖ STORE YOUR SYSTEM DATA IN A SECURE GIS DATABASE.
- ❖ "HOT-LINK" RELATED IMAGES (AS-BUILTS / TIE CARDS) TO YOUR PUBLIC WORKS FEATURES.
- ❖ PRINT CUSTOM MAPS FOR OFFICE AND FIELD USE.
- ❖ PERFORM ABUTTER QUERIES & REPORTS BY DEFINING OFFSETS FROM SYSTEM FEATURES.

CARTOGRAPHIC ASSOCIATES, INC.

PROFESSIONAL GIS CONSULTANTS

MUNICIPAL MAPPING • GIS

PUBLIC WORKS INFORMATION MANAGEMENT

11 PLEASANT STREET

LITTLETON, NH 03561



PROFESSIONAL GIS CONSULTANTS

MUNICIPAL MAPPING • GIS •
PUBLIC WORKS INFORMATION MANAGEMENT

11 PLEASANT STREET
LITTLETON, NH 03561

1 (800) 322-4540
Fax (603) 444-1366
www.cai-info.com



Simple To Use GIS Solutions For
Public Works
with

CAI'S PWIM MANAGER PUBLIC WORKS INFORMATION MANAGEMENT SOFTWARE

- ❖ Functions Using ESRI Geodatabase Technology
- ❖ Customizable Database Structure To Meet Your Specific Needs
- ❖ Attribute Editing Tools
- ❖ Add/Delete Feature Tools
- ❖ Automated Printing Utility
- ❖ Locate Assets Queries
- ❖ Abutter Queries For System Features
- ❖ Link Related As-Builts & Photos
- ❖ Custom Reporting Functions

To learn more call us at 1-800-322-4540

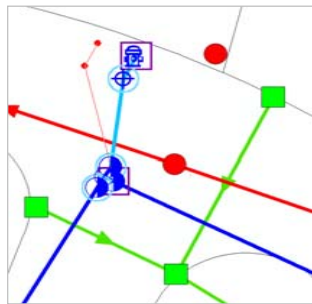
MANAGING YOUR PUBLIC WORKS DATA

As Public Works systems grow and change, your GIS data needs to change as well. Whether you need to update attributes for existing features, or incorporate new features after system expansion, the PWIM (Public Works Information Manager) system provides a powerful, yet simple-to-use GIS solution.

The PWIM solution incorporates the latest ESRI state-of-the-art Geodatabase technology along with a very simple user interface. Built in editing rules prevent common data entry errors while maintaining the data, structure and integrity of the Geodatabase. We understand that DPW users want to explore and analyze system data, not waste time trying to figure out how to access and edit the information.

ASSIGNING RELATIONSHIPS IN YOUR PUBLIC WORKS DATA

PWIM allows users to establish "Delta Relationships" between features within the ESRI Geodatabase. This example



demonstrates "parent-child" relationships between features. The blue Fire Hydrant being a Delta Parent (outlined with a purple square), to its

Hydrant Valve Child (outlined with a light blue circle). With these relationship rules built in, the user can perform edits without corrupting the integrity of the spatial database. This gives you the power and confidence to maintain your system data using the latest ESRI technology, built into a secure, easy to use desktop interface.

DEVELOPING YOUR PUBLIC WORKS GIS DATA SET

Using seamless integration between the Trimble GPS Analyst extension for ESRI ArcMap and the ESRI Geodatabase, CAI staff collects the accurate location of your system structures while mapping the system / pipe connectivity while in the field. This cost effective approach provides the PWIM Manager user with a turn-key solution that allows you to quickly begin capitalizing on the investment in GPS mapping your Public Works systems.

AUTOMATED MAP PRINTING UTILITY

Printing a Map of your system data integrated with other GIS layers is now easier than ever!



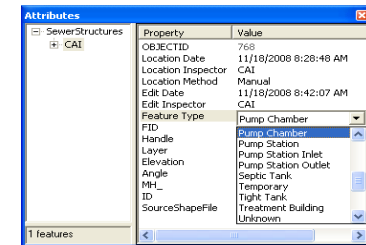
With the click of one button, you can access the PWIM Manager's built in Automated Map Printing utility. This utility empowers you to access stored map layouts to easily create custom

maps for use in the field and/or office. Turn on/off Aerial photos, or other available GIS data layers you want to display in your map, define the page layout and the extents of the map area for printing. It's really that simple!

To learn more call us at 1-800-322-4540

MAINTAINING YOUR SYSTEM ATTRIBUTE INFORMATION

The PWIM Manager application has simple to use attribute editing functionality built right into the system. This provides you the ability to maintain system attribute information using completely customizable, user defined, attribute fields and values. This approach uses drop down pick lists to ensure data gets entered quickly, consistently and accurately. Here is an example of the PWIM Attribute Edits Dialog:



EXPLORING YOUR ASSET DATA

Locating system assets and analyzing geographic relationships can provide powerful insight into managing your existing system and planning for future expansion.

The PWIM Manager provides an easy Locate Assets tool that allows you to query your system data based on the attributes in the Geodatabase. The user can also perform Abutter Queries by defining specific distances from target system features then automatically select other resulting system assets or parcels.

